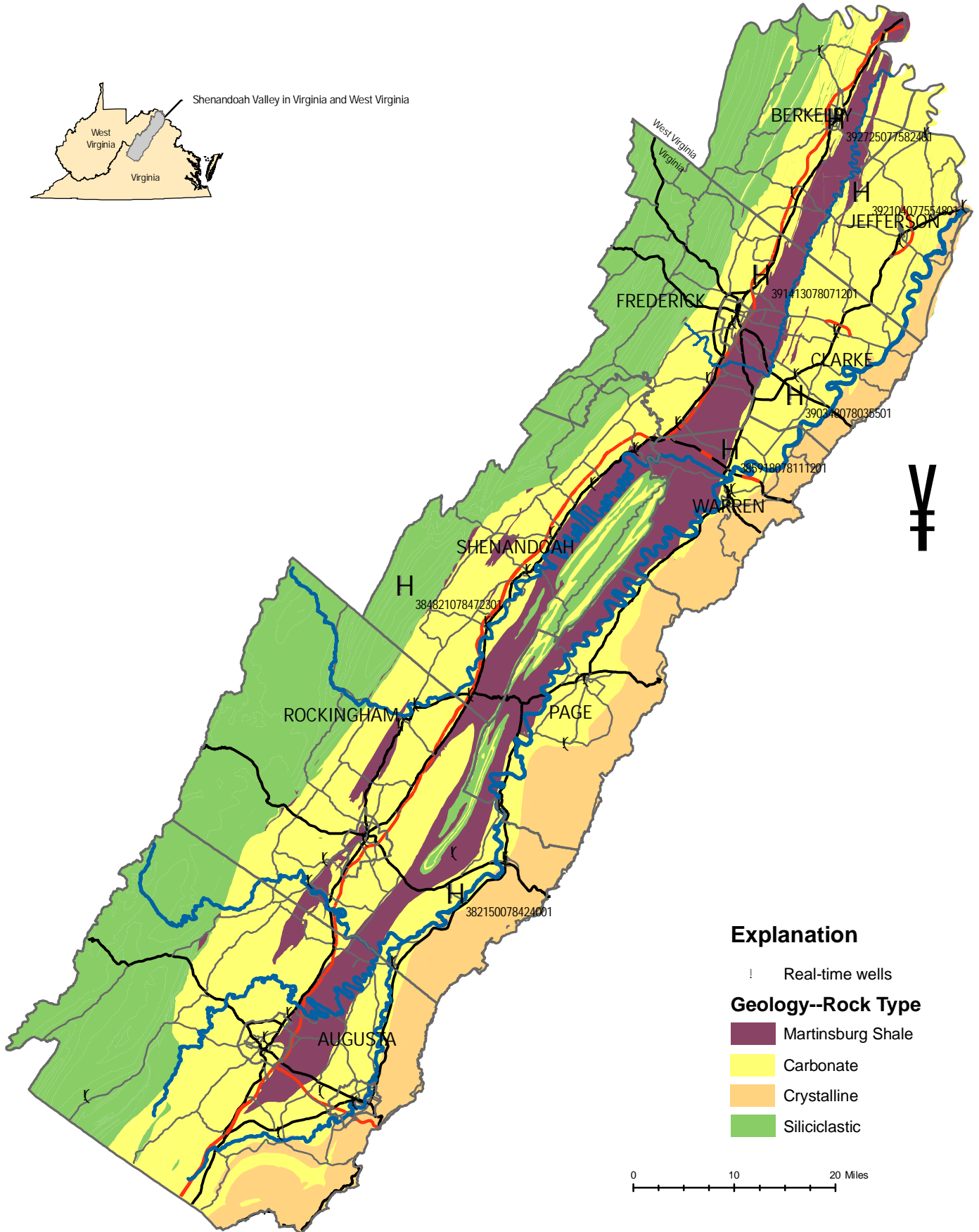


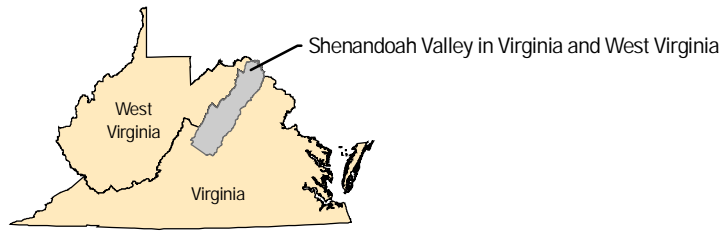
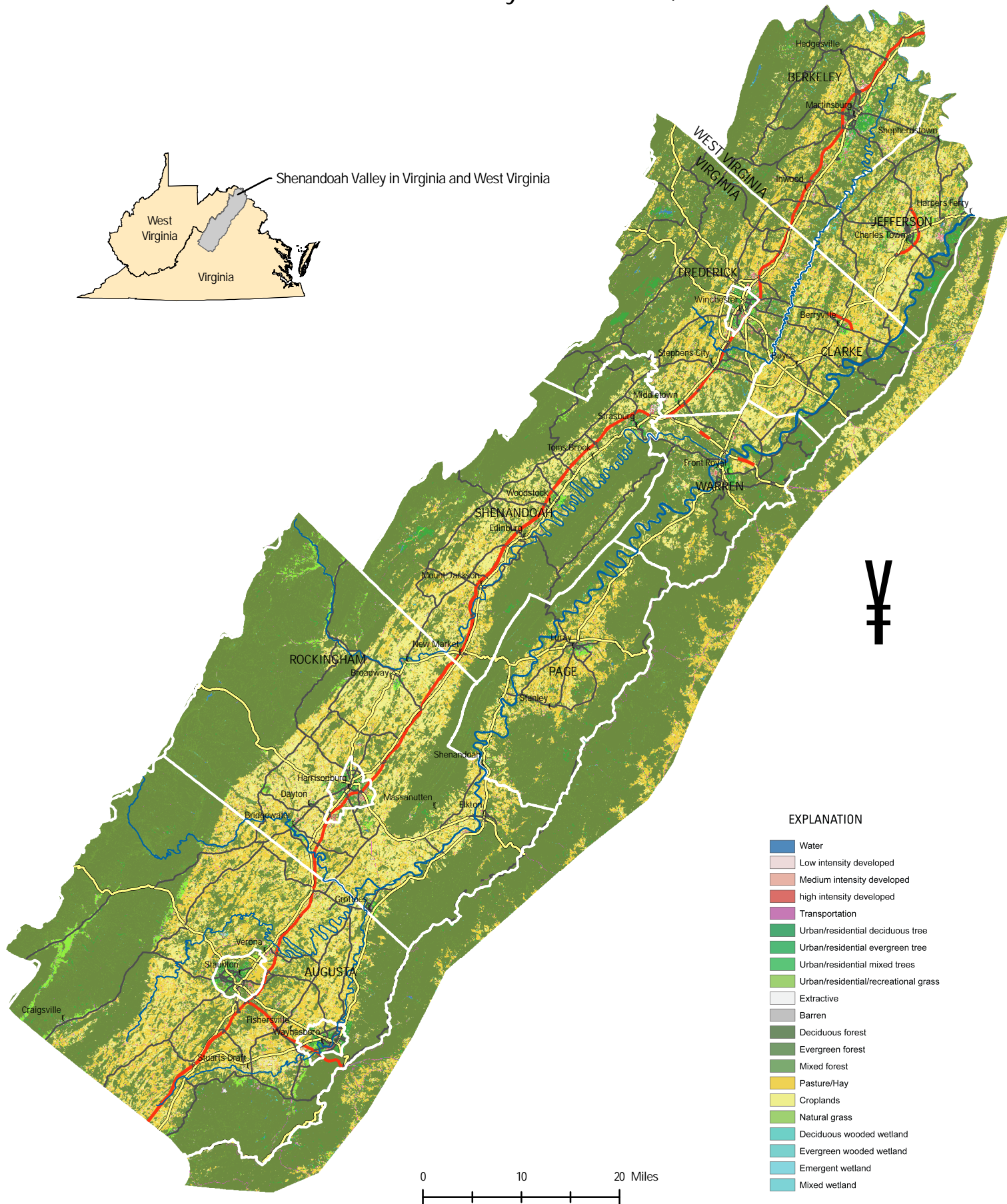
# Shenandoah Valley Natural Systems Symposium

## Shenandoah Valley Geology



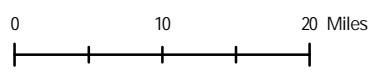
# Shenandoah Valley Natural Systems Symposium

## Shenandoah Valley Land Cover, 2001



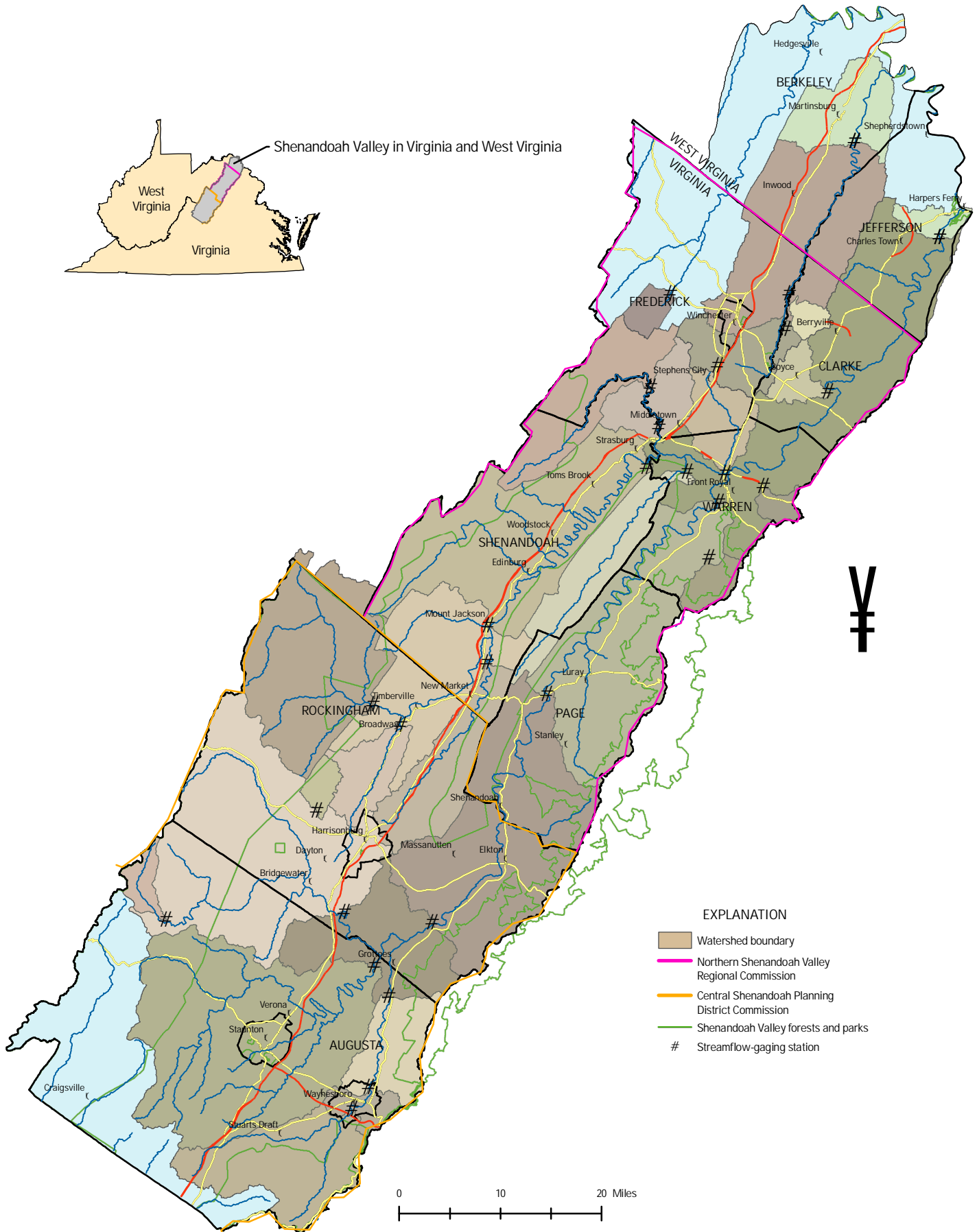
### EXPLANATION

- Water
- Low intensity developed
- Medium intensity developed
- high intensity developed
- Transportation
- Urban/residential deciduous tree
- Urban/residential evergreen tree
- Urban/residential mixed trees
- Urban/residential/recreational grass
- Extractive
- Barren
- Deciduous forest
- Evergreen forest
- Mixed forest
- Pasture/Hay
- Croplands
- Natural grass
- Deciduous wooded wetland
- Evergreen wooded wetland
- Emergent wetland
- Mixed wetland



# Shenandoah Valley Natural Systems Symposium

## Shenandoah Valley Hydrologic and Political Features



## Shenandoah Valley Topography

