

Federal and EPA Enterprise Architectures

Service-Oriented Architecture Implementation
Within the Federal Government

Odelia Funke, Director

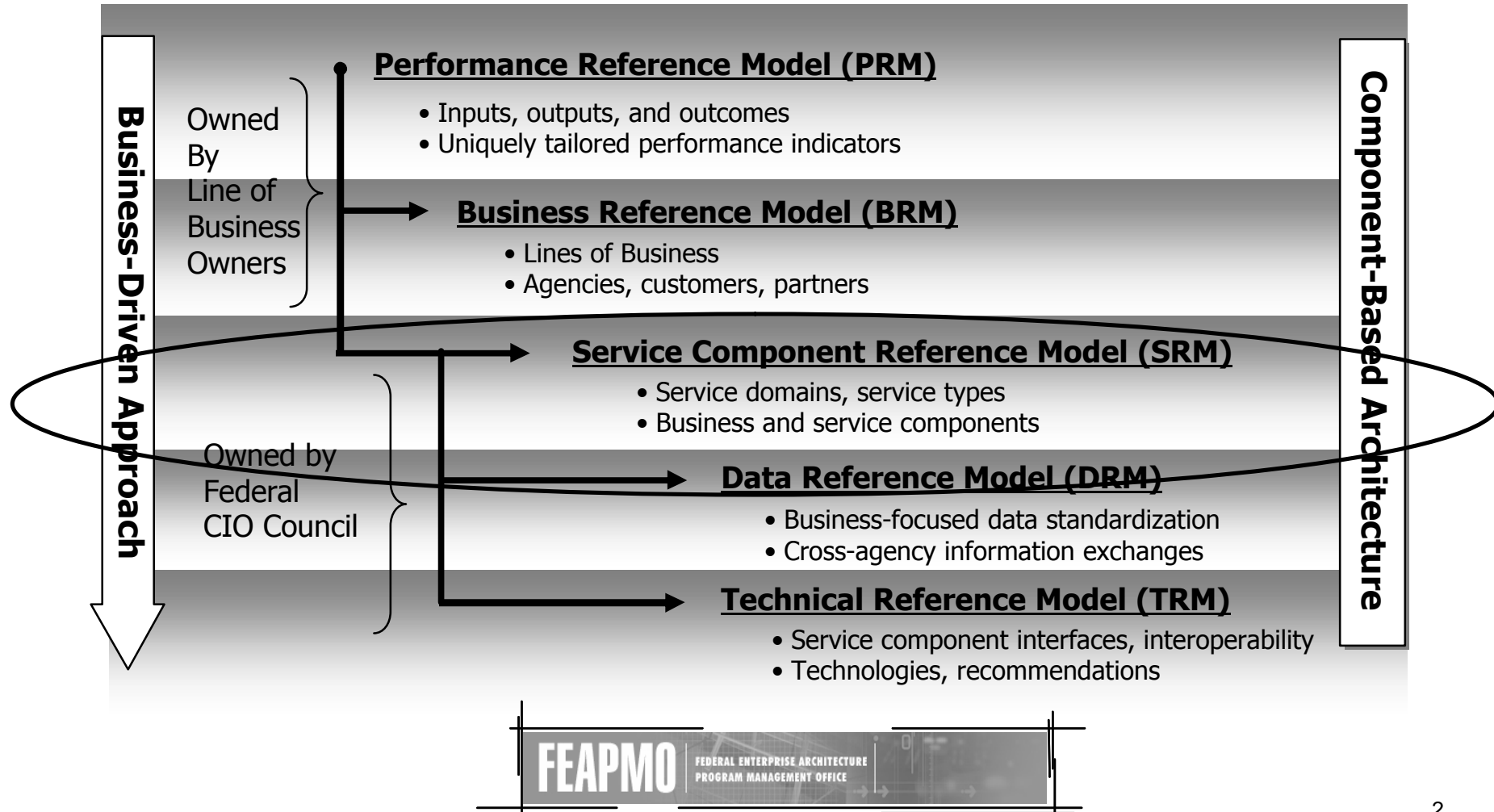
Mission Investment Solutions Division,

Office of Technology Operations and Planning



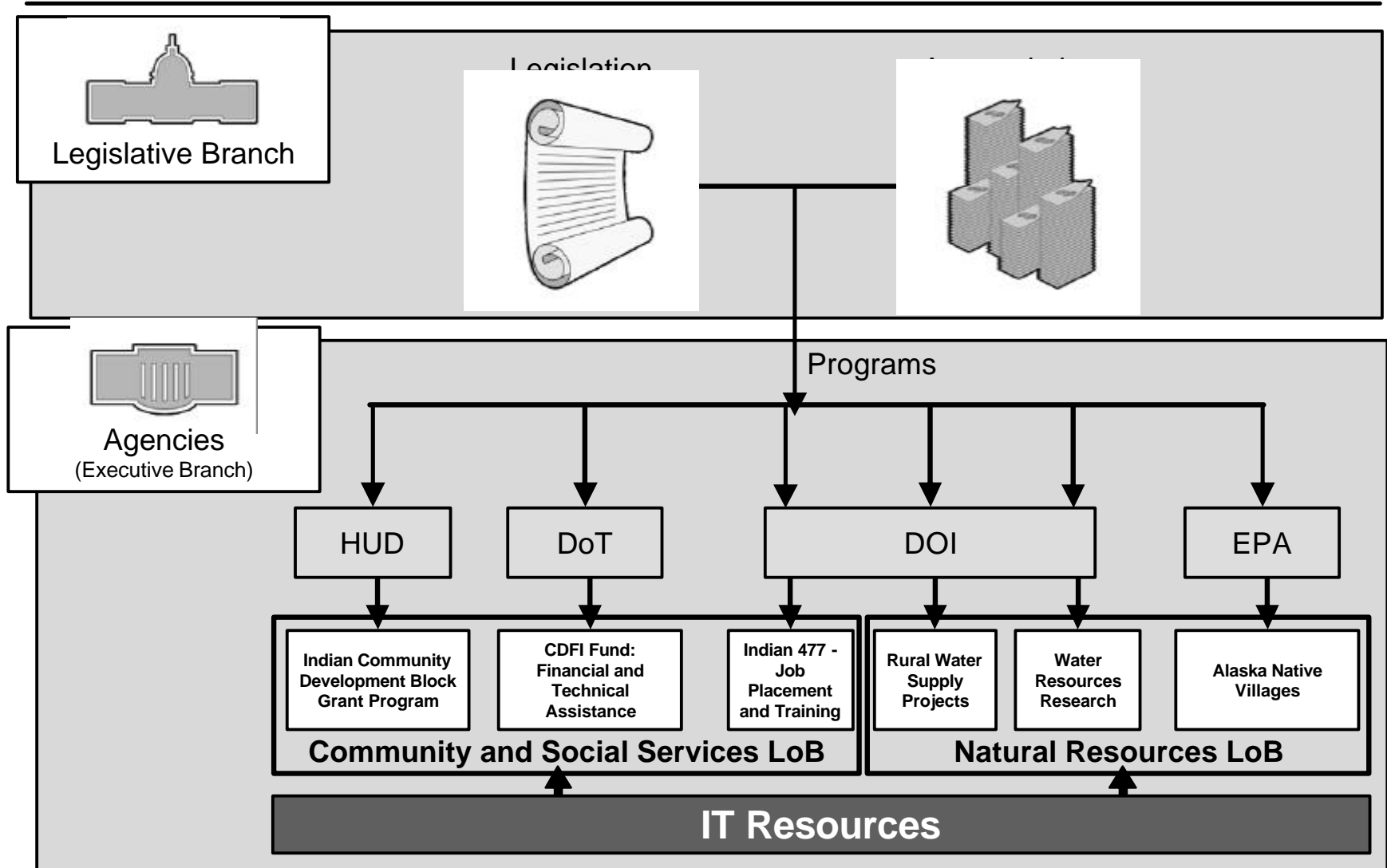
The Federal Enterprise Architecture:

A Model of the Federal Government, *a means for understanding who does what*



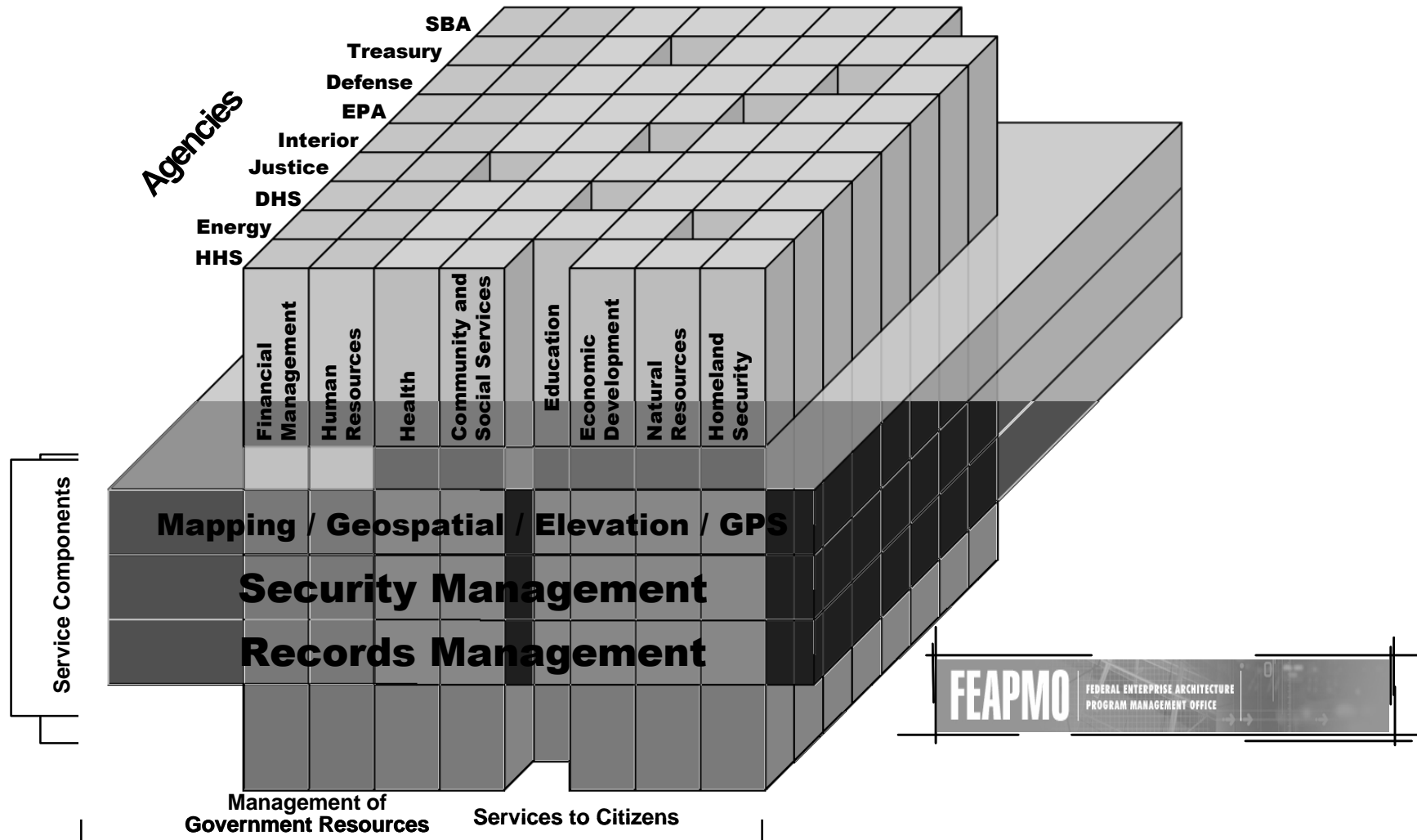


Lines of Business Initiatives: Expectations for Shared Service Delivery





FEA Vision: Common Business Lines Supported by Shared Service Components





CIO Council's Plan for Adopting SOA to Implement the FEA: 'Services and Components' Based Architectures

Background

- SCBA is a reuse-focused architecture that incorporates
 - Service Oriented Architecture (SOA)
 - The Federal Enterprise Architecture (FEA)
 - Industry best practices
- SCBA vs. SOA – different terms used on purpose
 - SOA can mean many different things: SCBA provides a **non-ambiguous** description
 - SCBA incorporates advice on **organizational, governance, process, and culture**
 - SCBA is specifically targeted at **government** (FEA)
 - SCBA incorporates both **process** and **IT** reuse
- First chapter is an overall "executive strategy"
 - Additional chapters will add focused detail

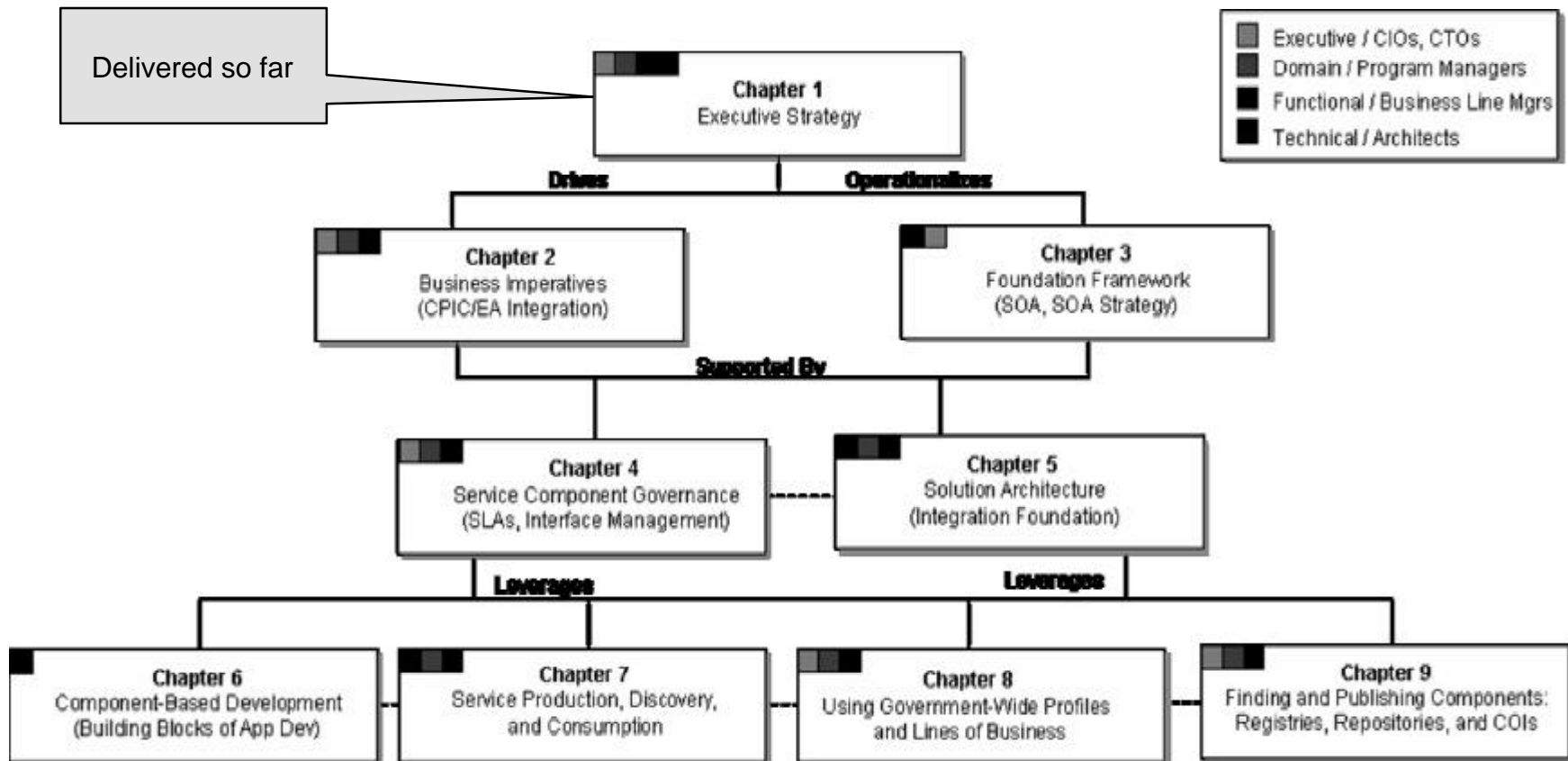
Value Proposition

SCBA will greatly enhance agencies' ability to accomplish their missions by **increasing agility** through service orientation and **reducing costs** through reuse.

Strategic Guide for Implementing Distributed and Reusable Services and Components in Government



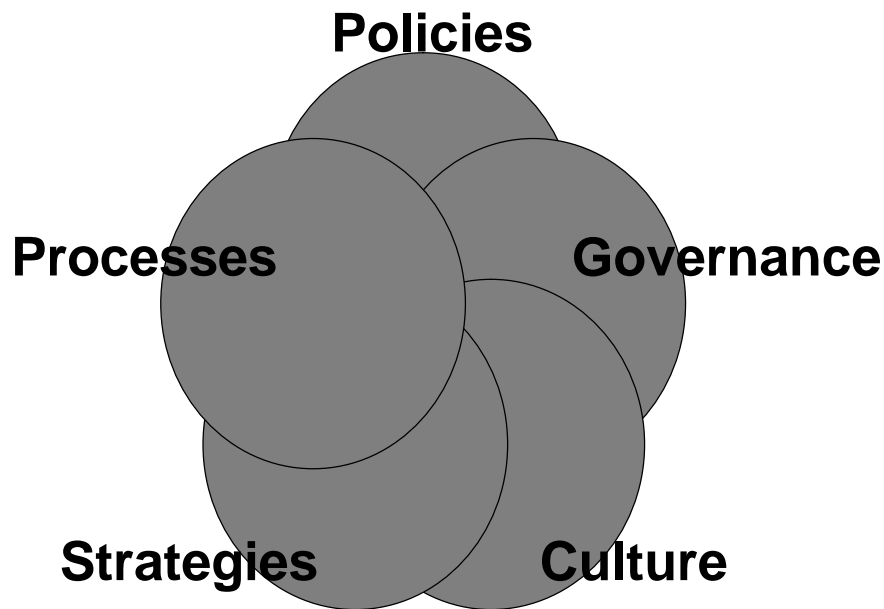
SCBA Development – A 9 Volume Strategy





Reusing Service Components Requires New Business Rules – Must incorporate changes to all dimensions of the organization

Non-Technical Dimensions of Reuse

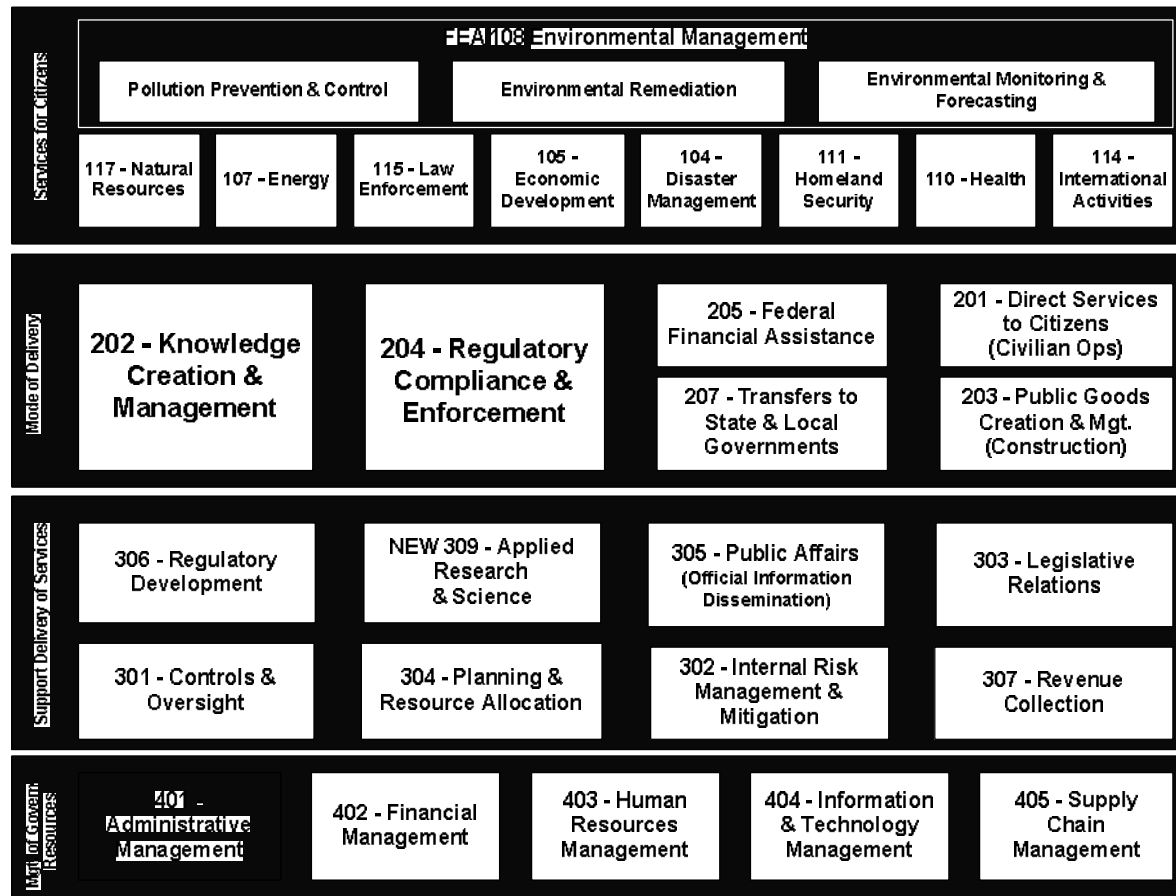


Non-Technology Change Areas

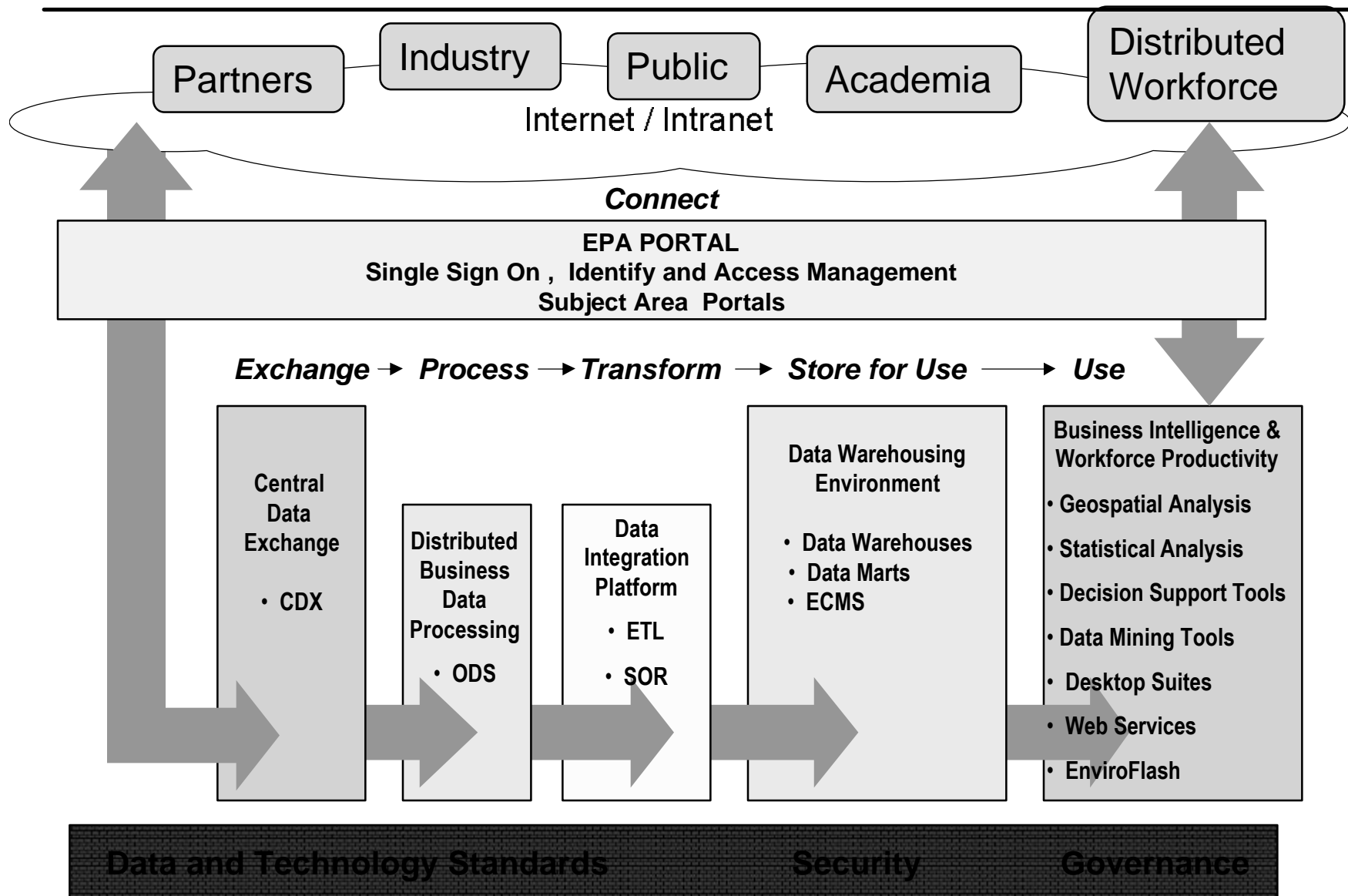
- **Policies:** need to alter policies to support reusing assets from any source, and set specific, measurable goals for levels of reuse
- **Strategies:** needs to move from strategies that are narrowly focused on programs to ones focused on producing and integrating reusable services across the entire government
- **Processes:** need to change software development and capital planning processes to make looking for reuse opportunities a core task
- **Culture:** needs to change through a combination of executive recognition and incentive programs that strongly reward reuse
- **Governance:** need to change to take into account that a service may be used by multiple organizations, and put appropriate service level agreements in place

EPA's Line of Businesses

Moving towards a Shared-Service Model



EPA Target Architecture: Formed Upon A Shared Enterprise Services Model



Moving Forward

- **SOA already means many things to many people**
- **The federal government is adopting SOA - our strategies for SOA implementation must align**
- **Reach out to other Agencies:**
 - **To understand how our work relates to theirs,**
 - **Seek those who can help – there are smart people out there who can help**
- **Keep asking; what are the business services being delivered?, who is the customer?, and what are the service components needed to deliver the business service?**
- **And, equally important, what services should EPA be a consumer of?**